



POWER TOOLS™

No Dust. No Water. No Problem.

iQ360x QUICK START GUIDE

READ OPERATOR'S MANUAL BEFORE USING THIS TOOL

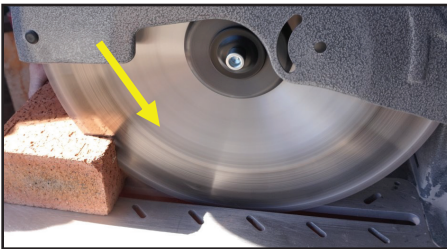


WARNING

MAKE SURE TRIGGER LOCK
BUTTON IS DISENGAGED
BEFORE PLUGGING INTO
POWER SOURCE

ASSEMBLING THE iQ360x

Install saw table top onto dust
collection tub as shown.



QUICK CUTTING TIP

Always cut material directing
dust down into the vacuum
slot as shown.



INCORRECT CUTTING METHOD

NEVER cut directly on top of
materials as shown. This can
result in serious injury and
dust exposure.